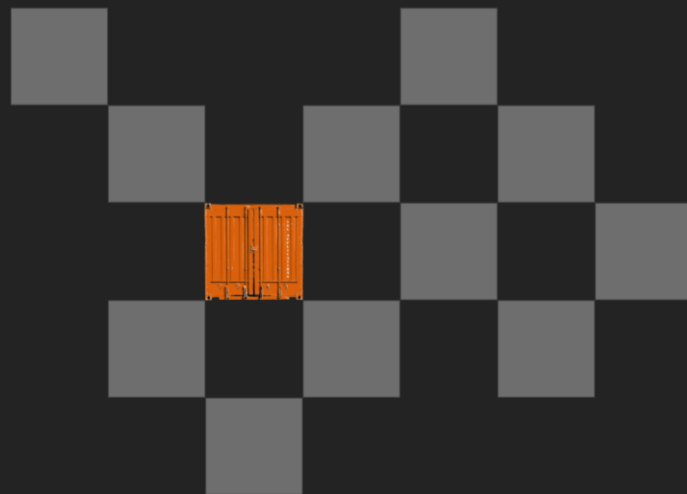


# CHESSCON

SHIFT PREVIEW





## CHESSCON SHIFT PREVIEW

### Mission



- Simulate and optimize your current shift planning
  - Optimize deployment of equipment
  - Optimize yard allocations
  - Avoid yard clashes
  
- Based on your real actual TOS data:
  - Yard layout
  - Container inventory
  - Work queues
  - Equipment allocations (Pools & POWs)
  - Yard allocations



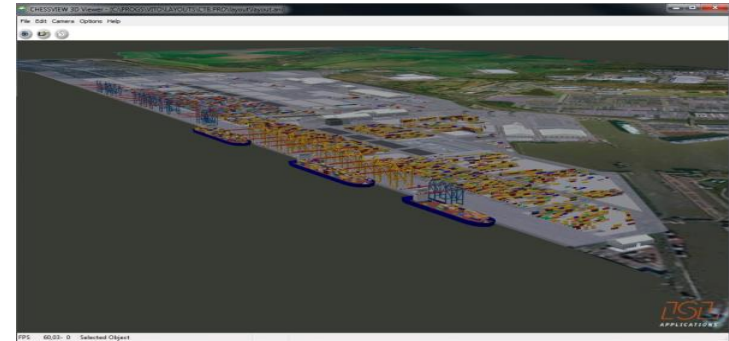


# CHESSCON SHIFT PREVIEW

## Advantages



- Easy to use
- Almost all required data imported from the TOS
- Avoid manual interaction by defining standard reactions of the system
- High Speed Simulation
  - About **1000** containers per minute





## CHESSCON SHIFT PREVIEW against CHESSCON Virtual Terminal Emulation

- You can do the same with our Virtual Terminal Emulation
  
- Virtual Terminal Emulation
  - Same results as in real world
  - It takes time to prepare a emulation run
  - It takes time to run emulation (max. 5 times faster than real time)
  - approx. 4 hours for one shift ☹
  
- SHIFT PREVIEW
  - Nearly same results as in real world
  - Runs without connection to the real TOS
  - Less than 5 minutes for one shift ☺

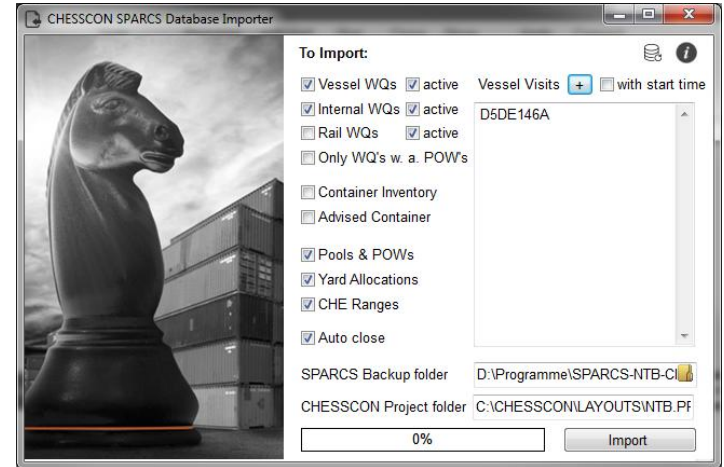
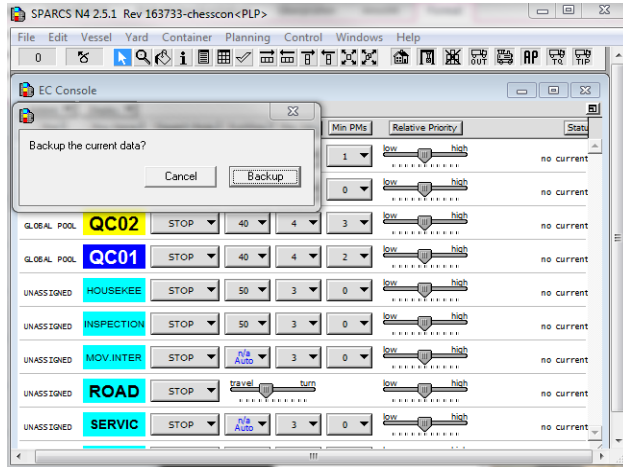




# CHESSCON SHIFT PREVIEW

## Technical structure

- Event-based simulation is required to allow high-speed calculation
- Real TOS does not allow event-based simulation
- We are using a self developed “light TOS” which allows event-based simulation
- Shift information are imported from real TOS into the “light TOS”

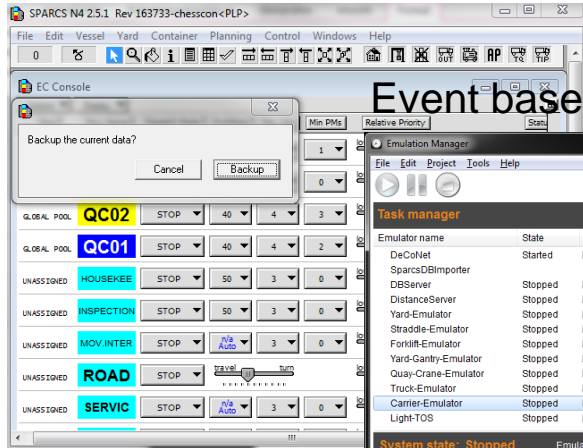


# CHESSCON SHIFT PREVIEW

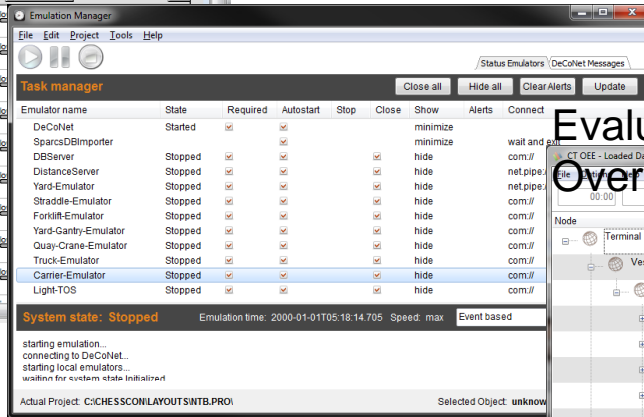
## How it works



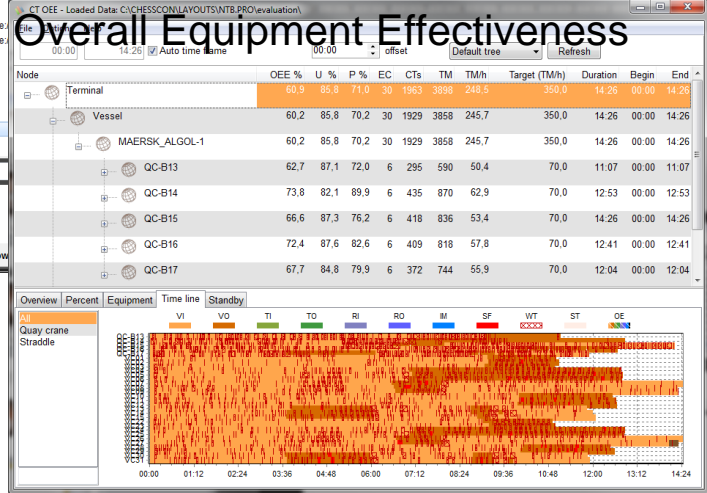
### TOS



### Event based Simulation



### Evaluation



1x Vessel 5x Quay cranes 25x Straddle Carrier

1963 CT real duration: **14:26 hours**

Simulation duration: **30 secs**

**Be proactive not reactive**

**CHESSCON**

SHIFT PREVIEW

**Optimize your shift in minutes**





*APPLICATIONS*

**THANK YOU FOR YOUR ATTENTION**

**ISL APPLICATIONS GMBH**

Barkhausenstrasse 2  
27568 Bremerhaven  
Germany

P +49 471-30 98 38-38  
[www.isl-applications.com](http://www.isl-applications.com)